

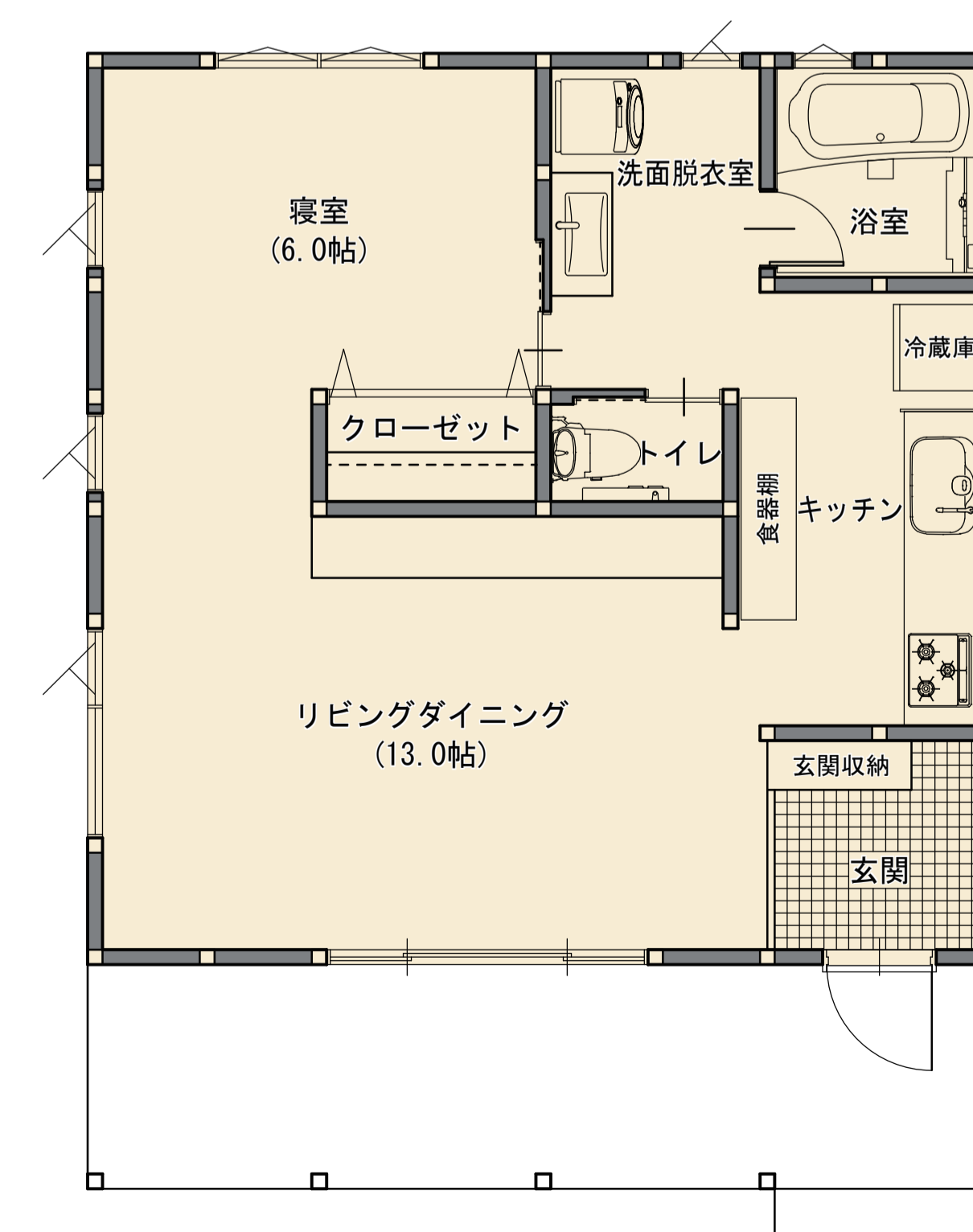
PLAN 01 (平屋 16坪)



CONCEPT

あえてのワンルーム
丁度いい快適な
生活

DETAIL



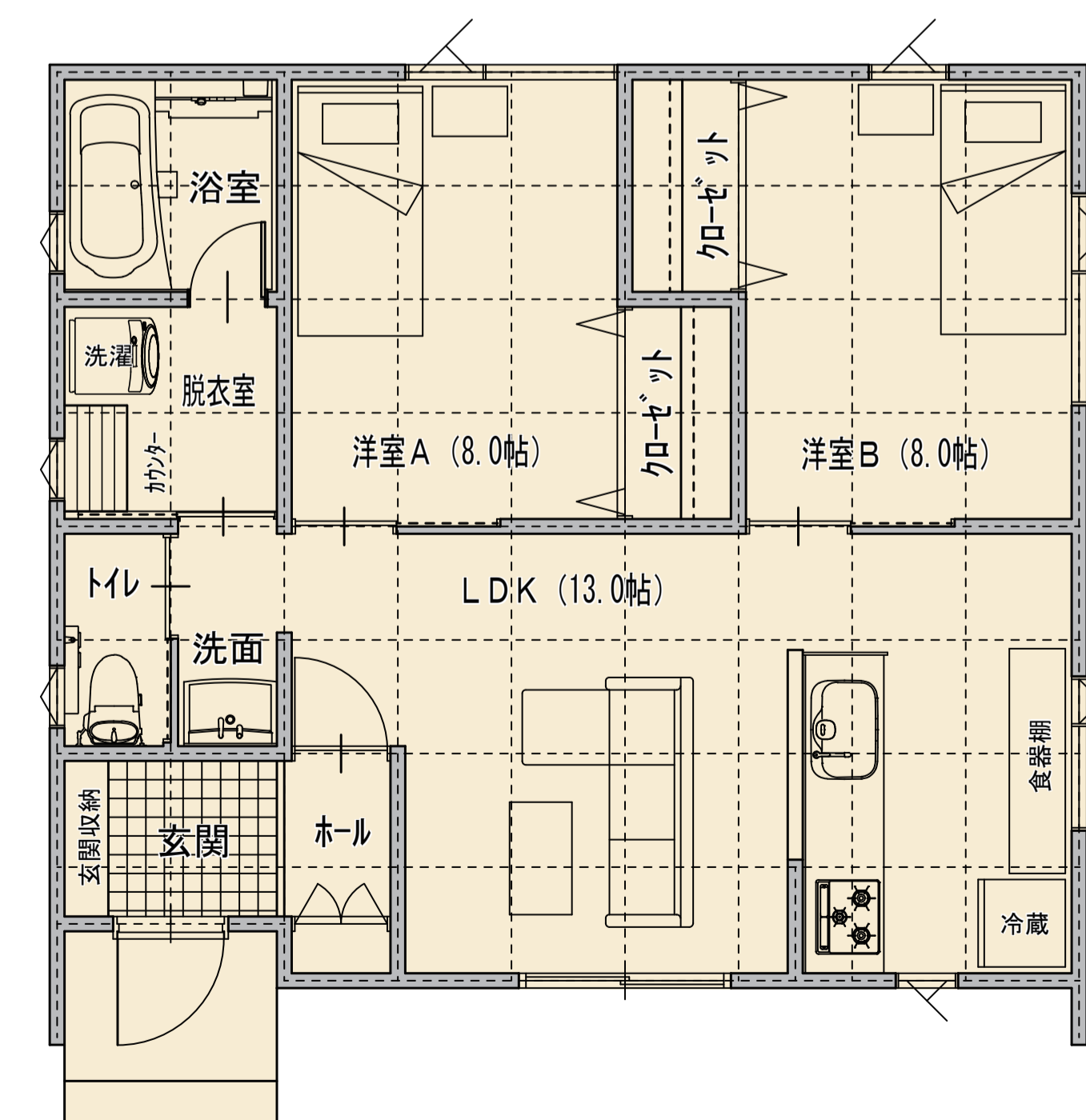
PLAN 02 (平屋 18坪)



CONCEPT

コンパクトな平屋
ひとり暮らしにも

DETAIL



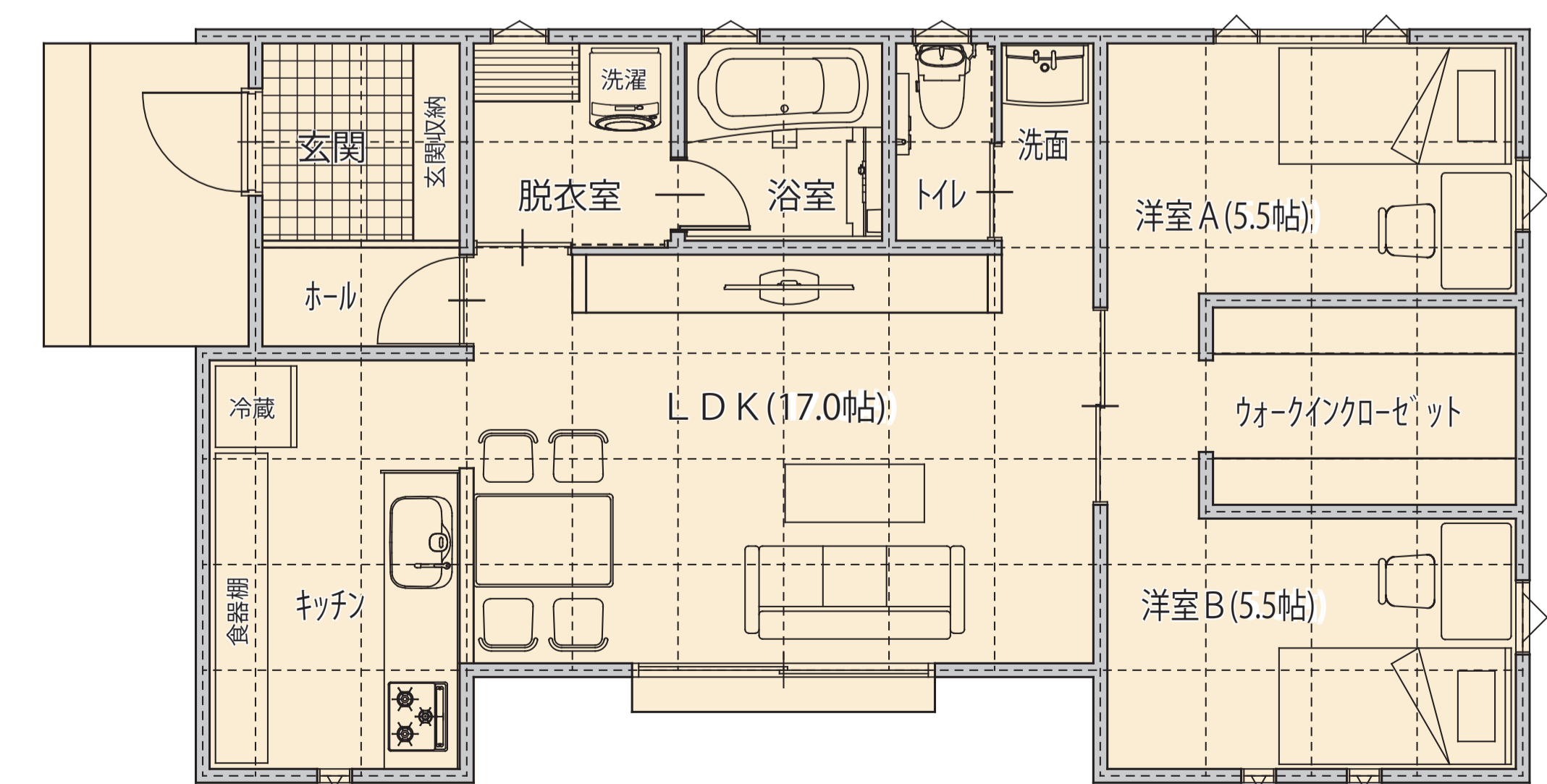
PLAN 03 (平屋 20坪)



CONCEPT

温もりを感じる
二部屋の洋室

DETAIL



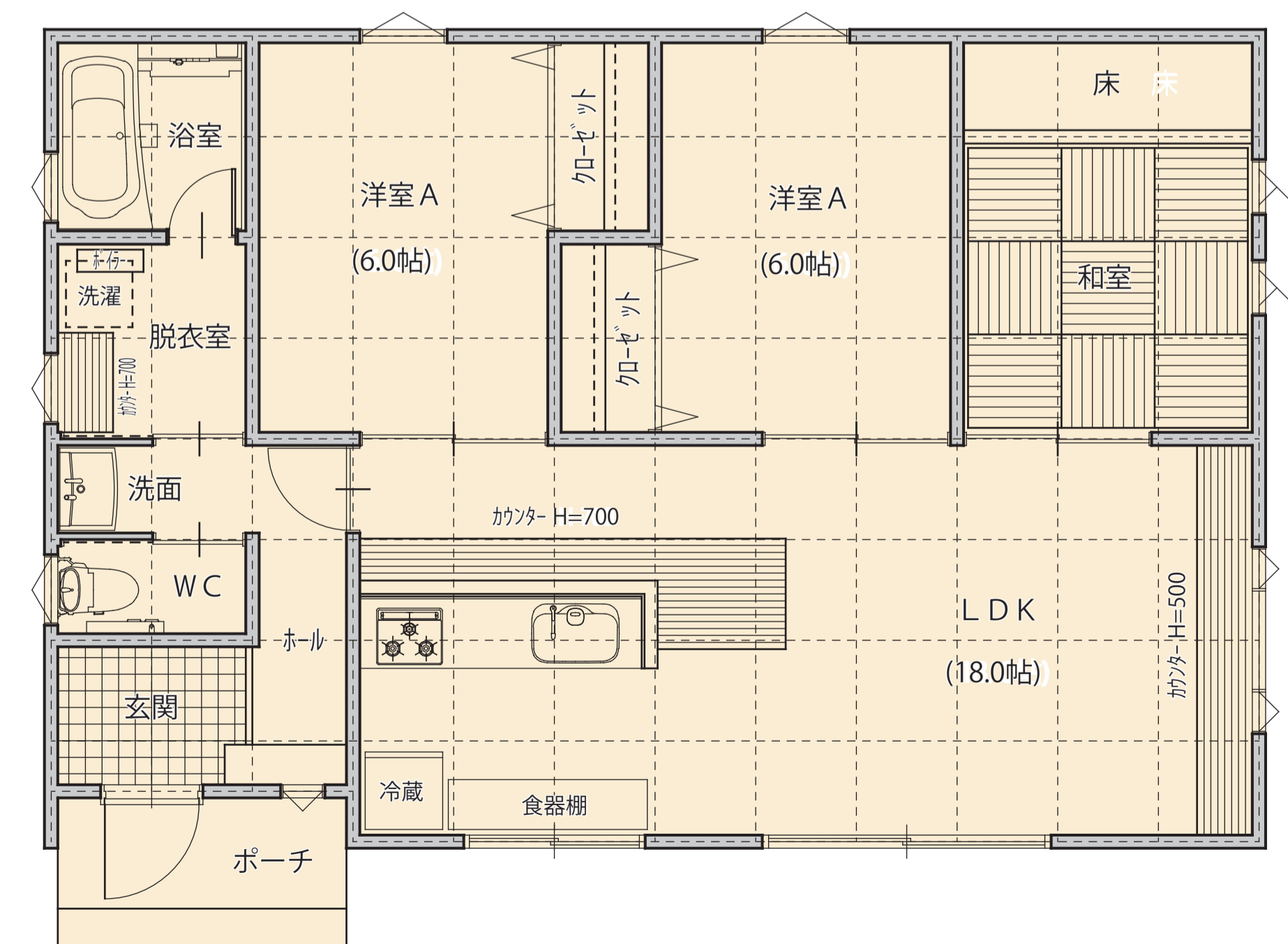
PLAN 04 (平屋 24坪)



CONCEPT

畳の部屋でくつろぐ
ひととき

DETAIL



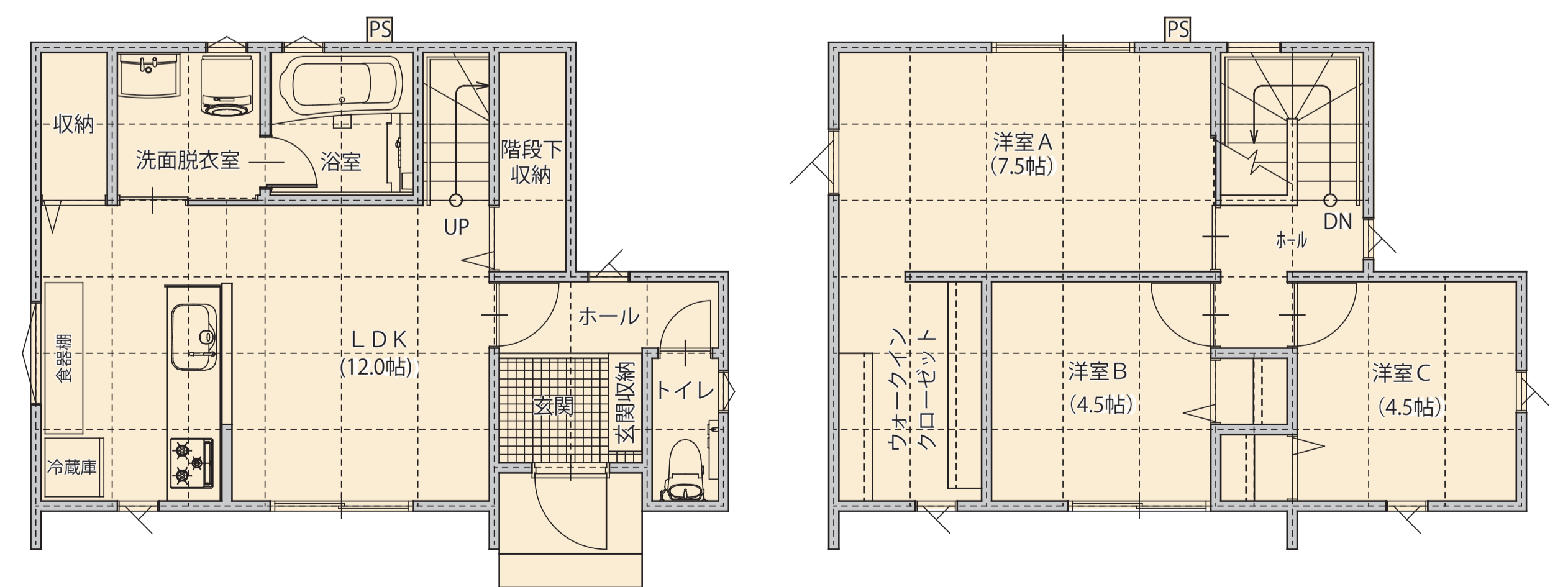
PLAN 05 (2階建 23.75坪)



CONCEPT

コンパクトながら
しっかり収納

DETAIL



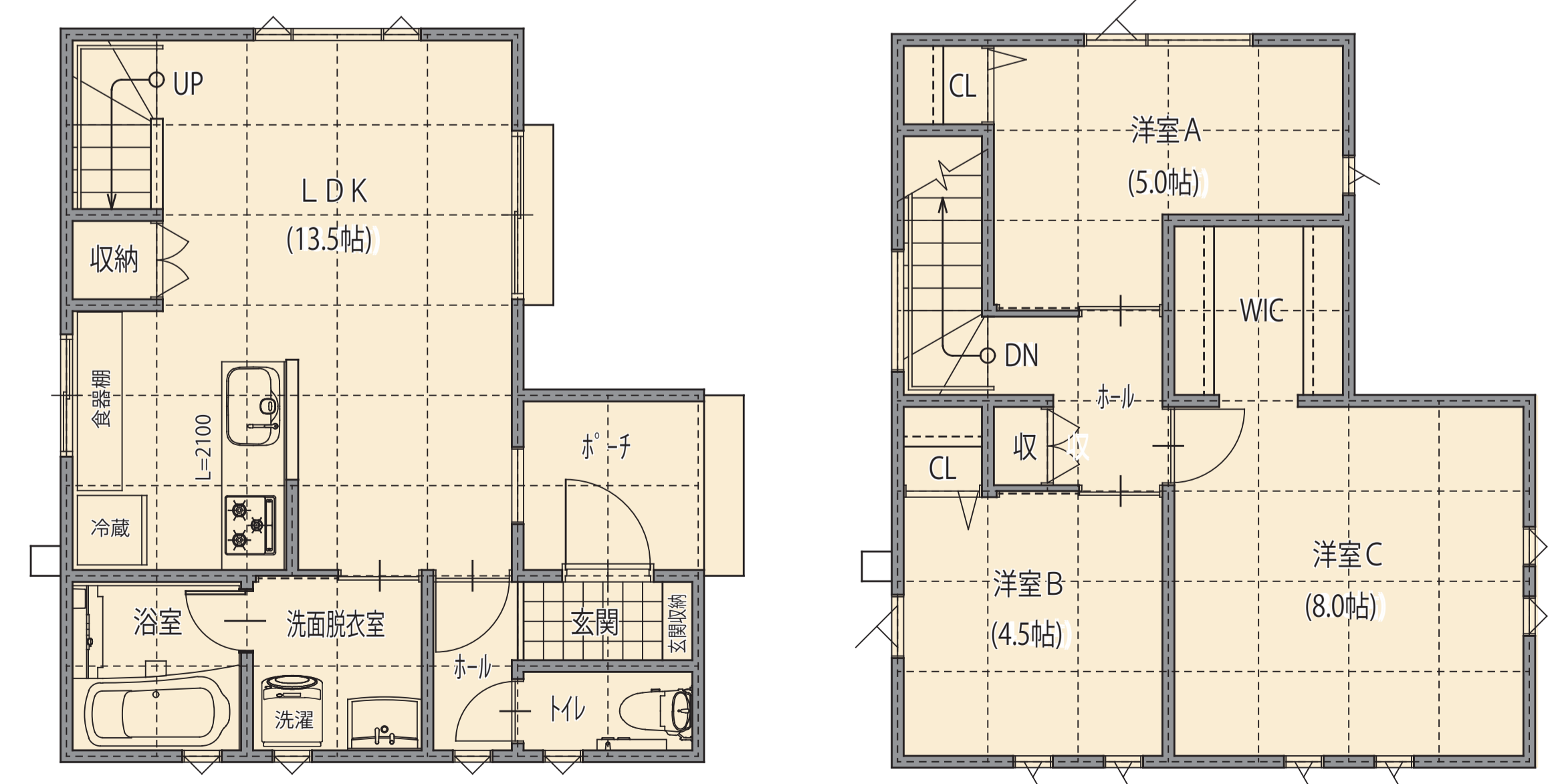
PLAN 06 (2階建 24坪)



CONCEPT

無落雪屋根と片流れ屋根のおしゃれな外観

DETAIL



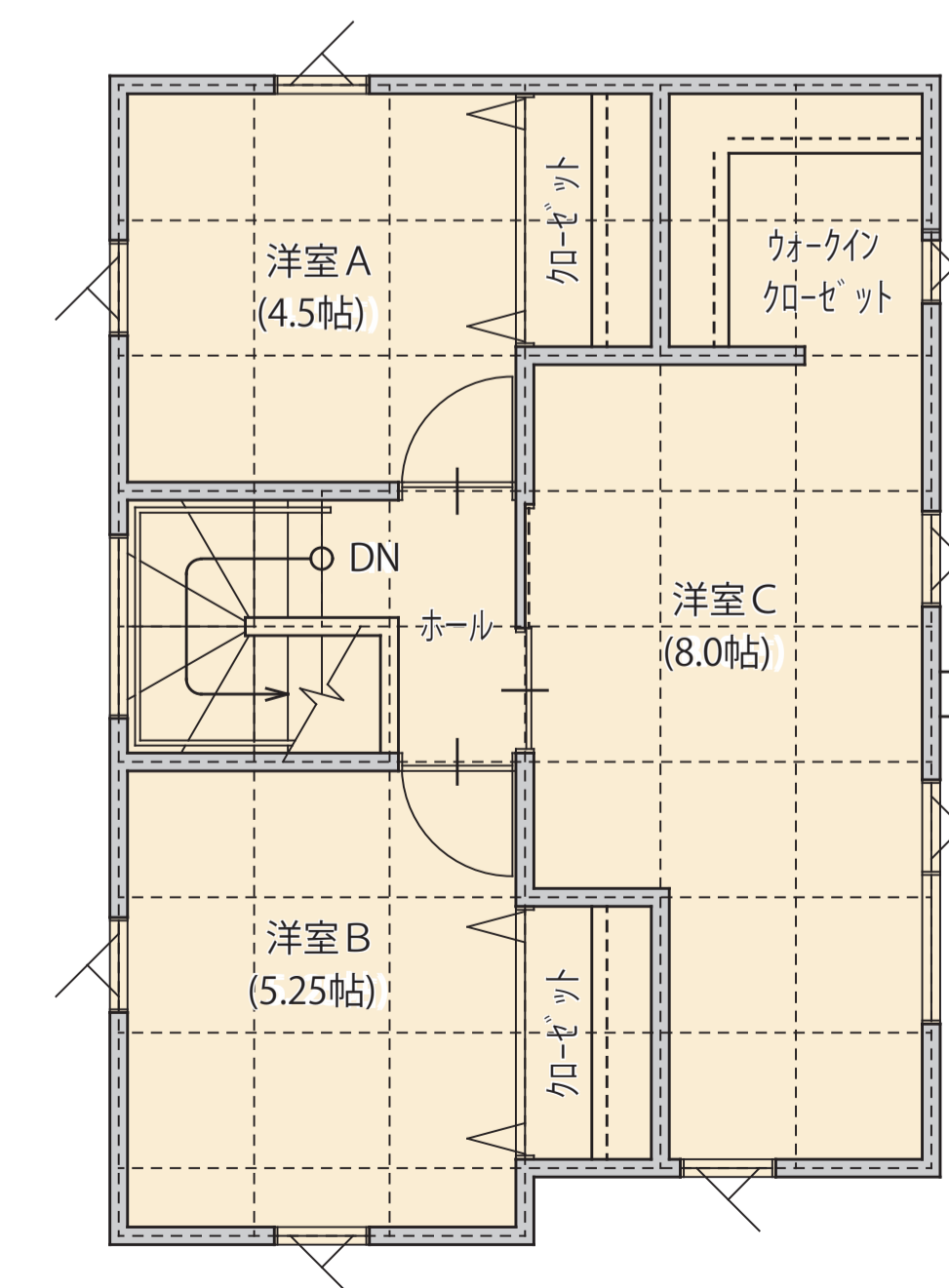
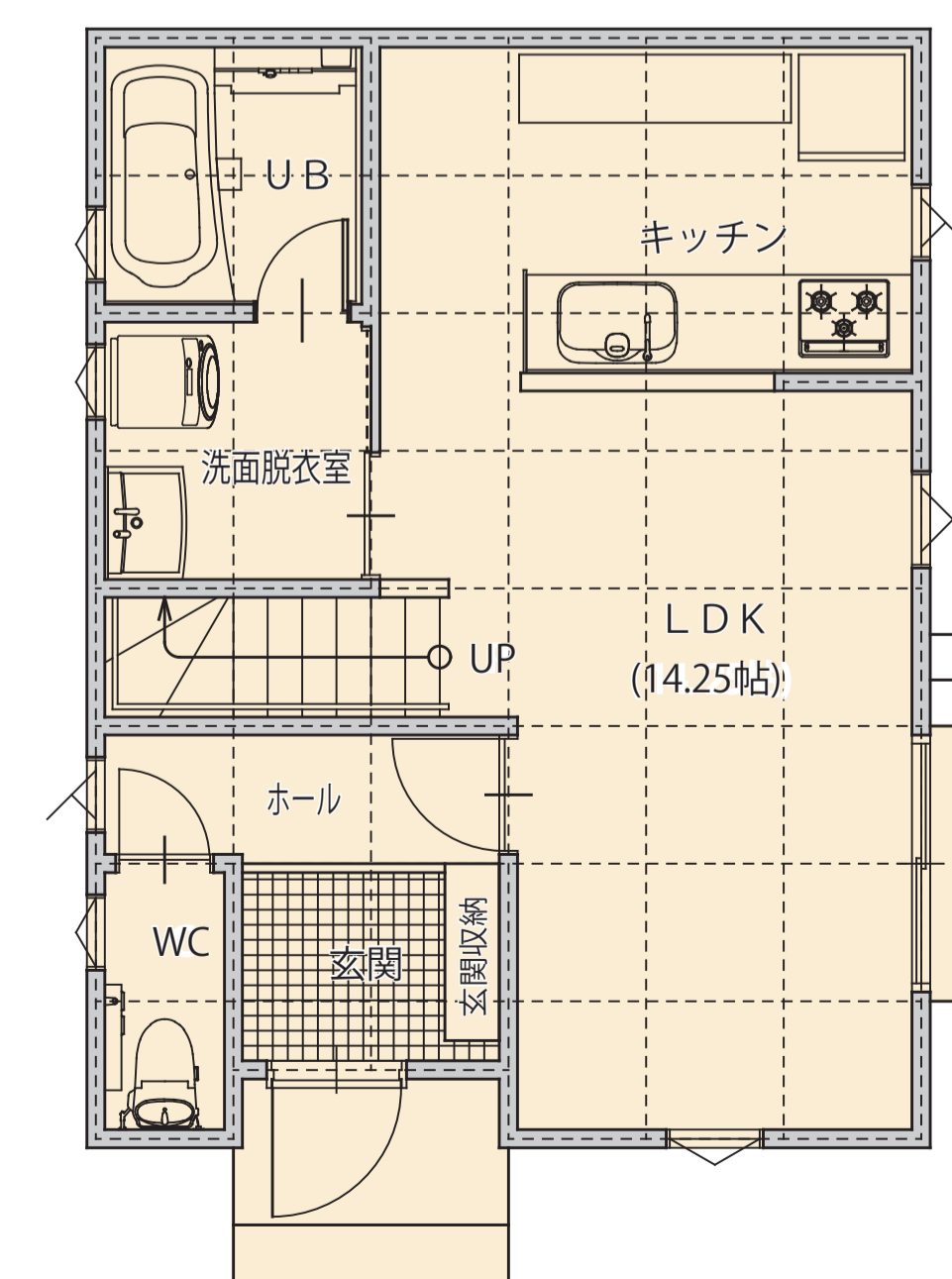
PLAN 07 (2階建 24.13坪)



CONCEPT

3LDK無落雪住宅
キッチンと洗濯機が
近くてうれしい

DETAIL



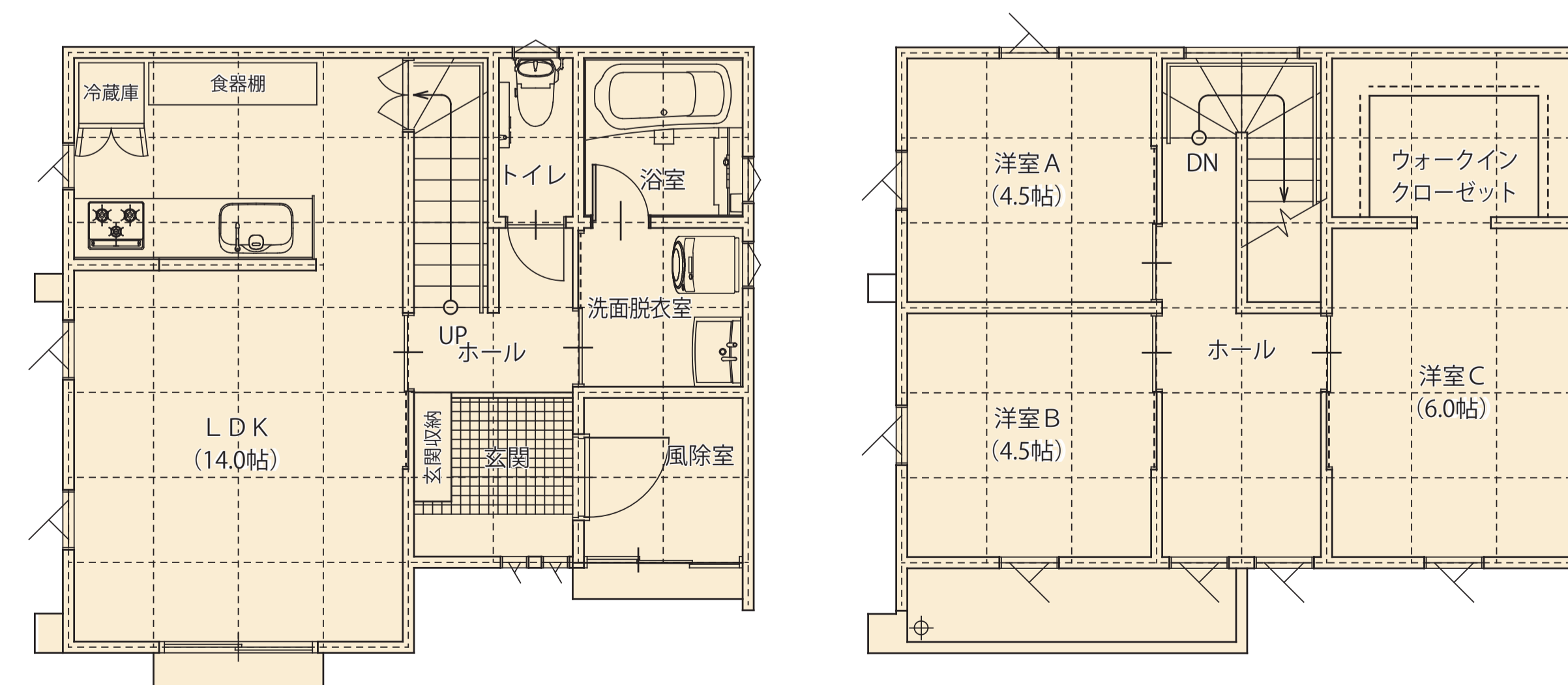
PLAN 08 (2階建 25坪)



CONCEPT

風除室付き 二階の
広めのホールはサン
ルームとしても

DETAIL



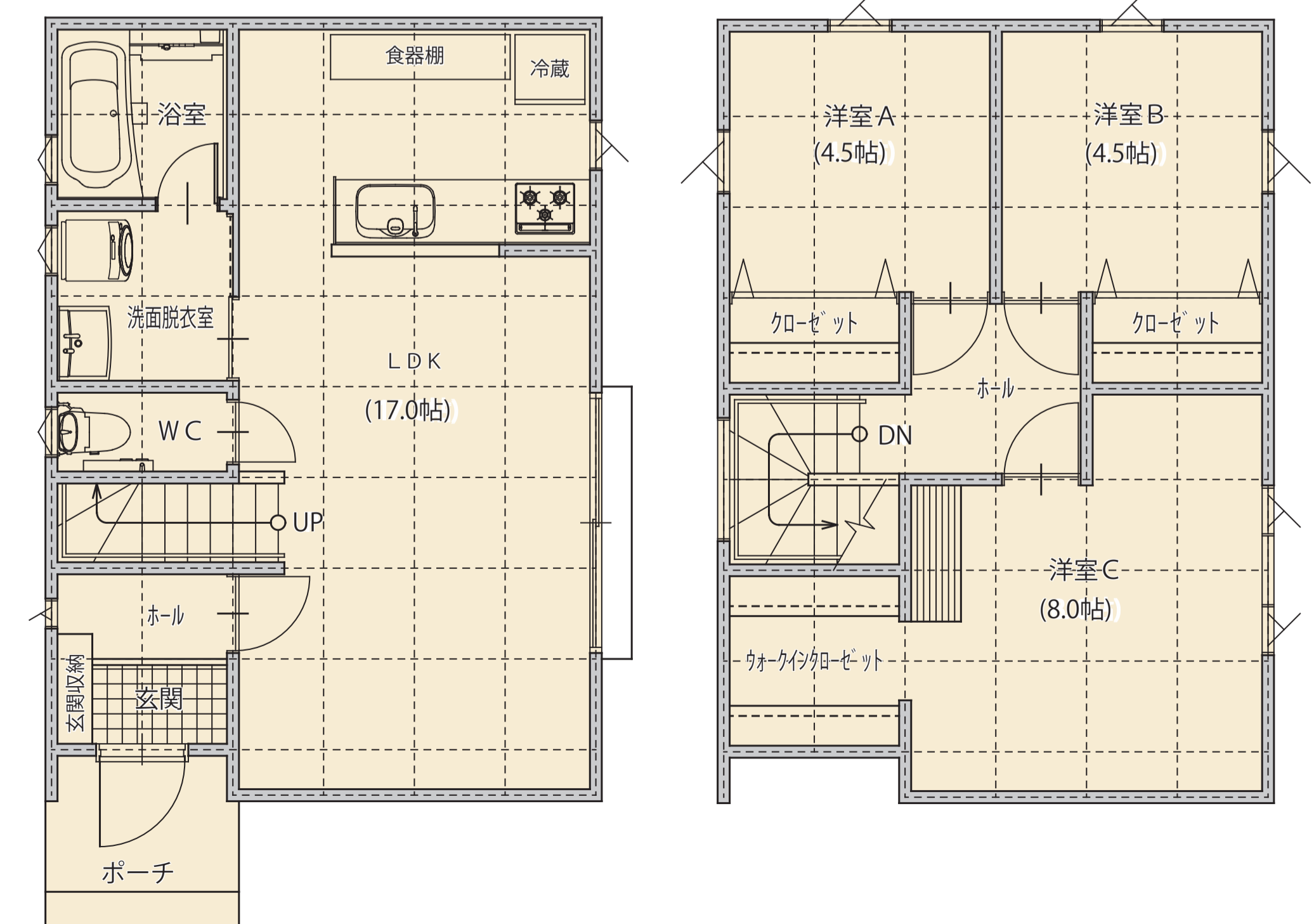
PLAN 09 (2階建 25坪)



CONCEPT

リビングトイレで
子どもや高齢者にも
安心

DETAIL



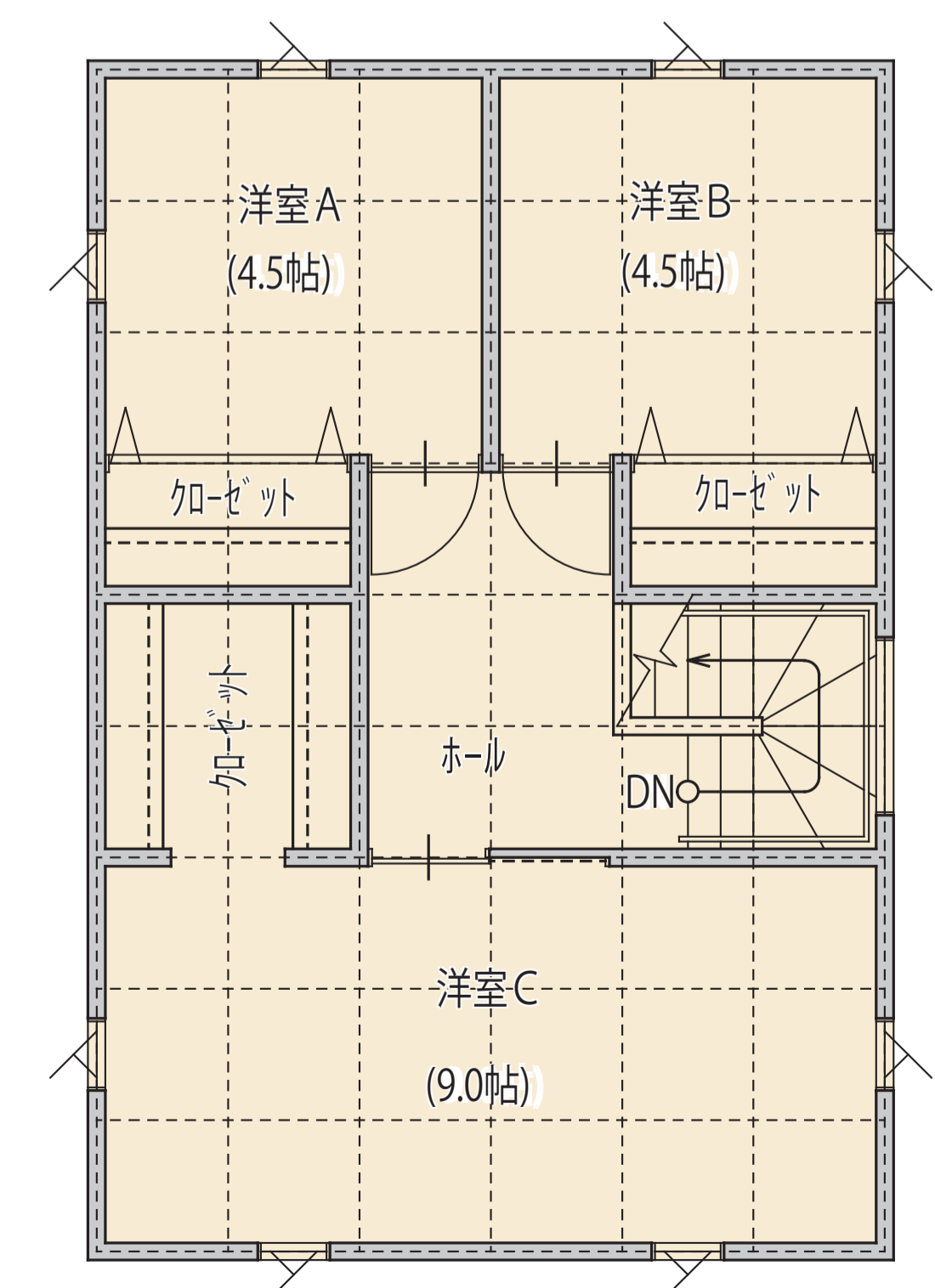
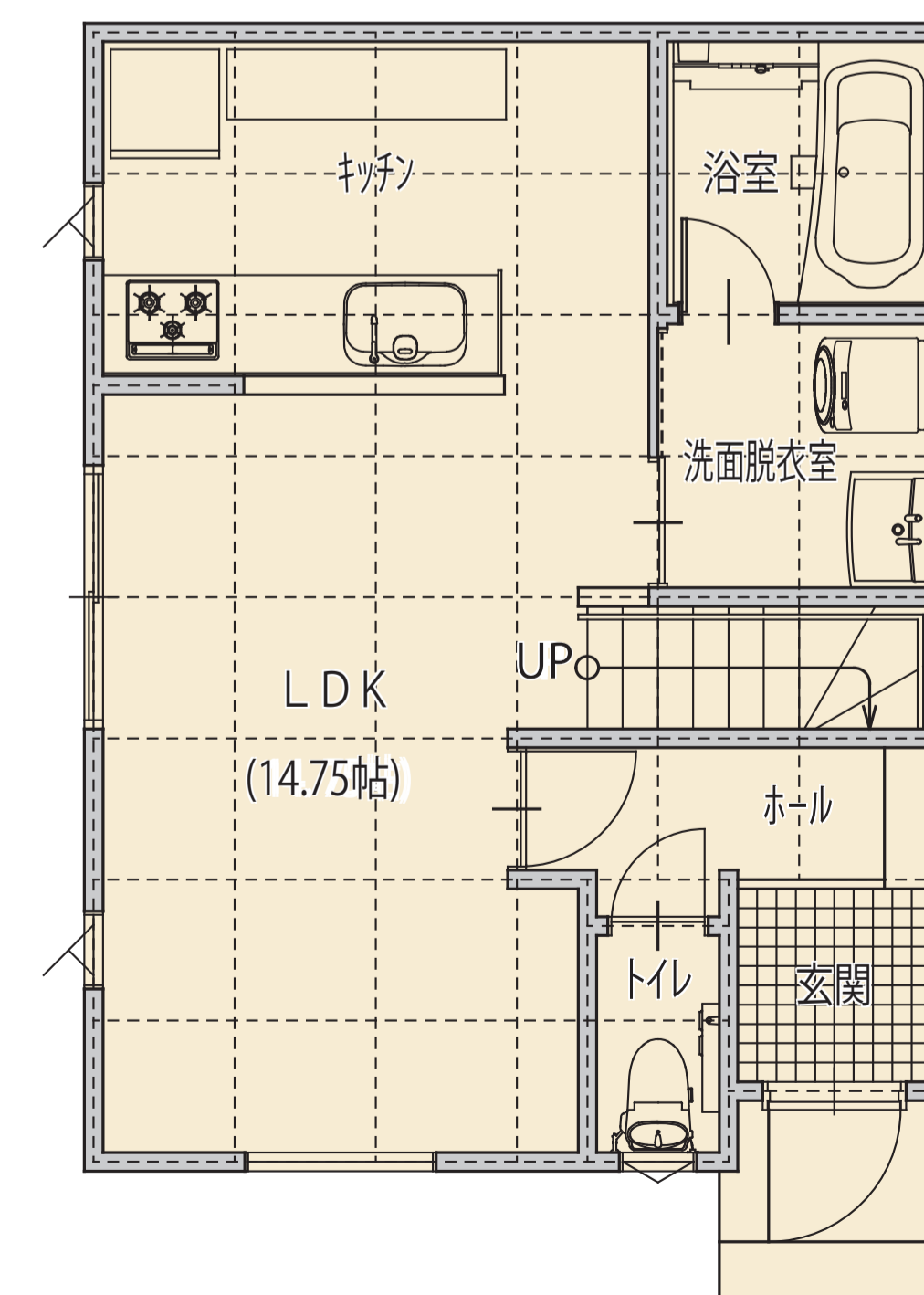
PLAN 10 (2階建 25.31坪)



CONCEPT

オーバーハングが
特徴の外観

DETAIL



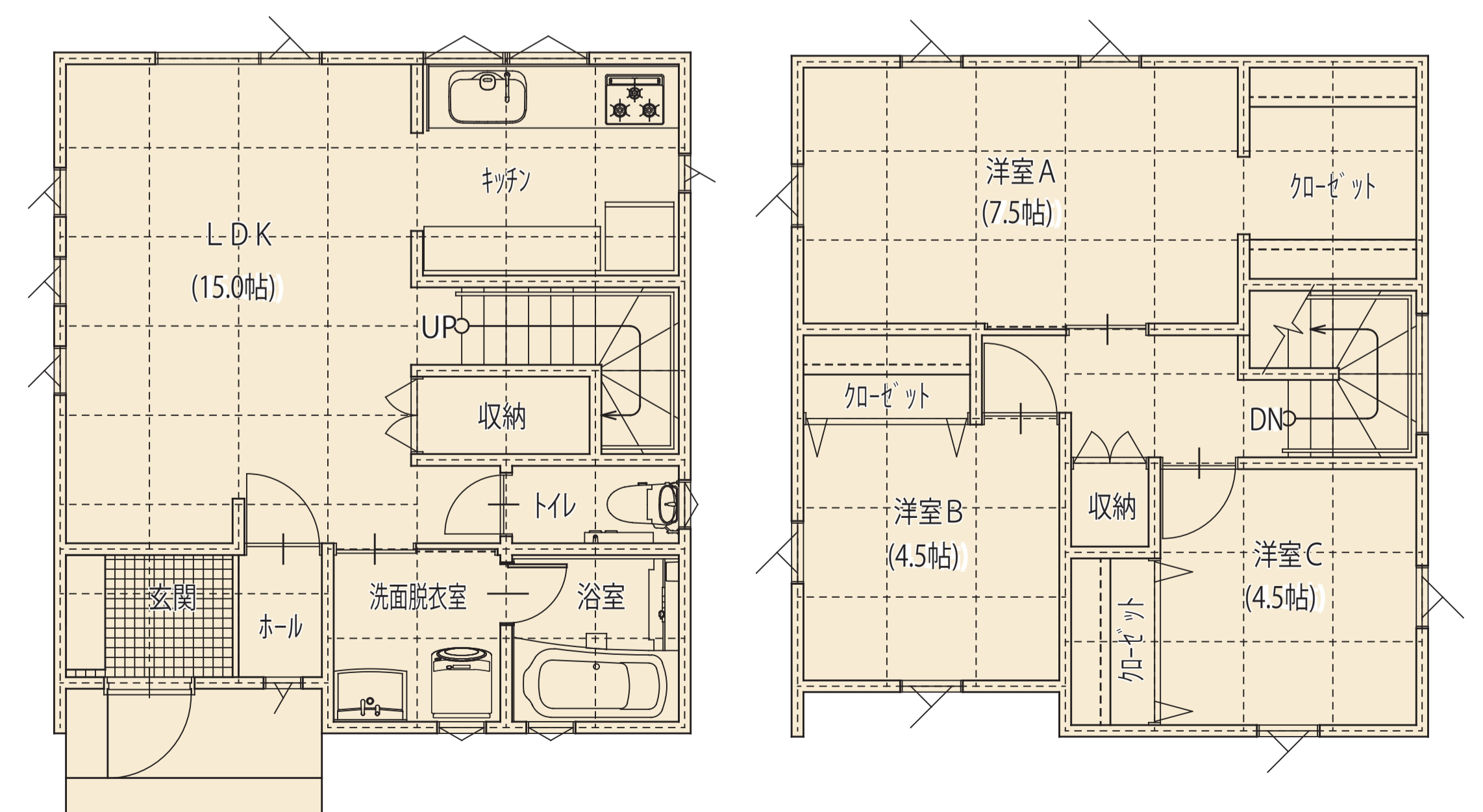
PLAN 11 (2階建 25.5坪)



CONCEPT

壁付けキッチンで
スッキリ
リビングダイニング

DETAIL



PLAN 12 (2階建 27.31 坪)

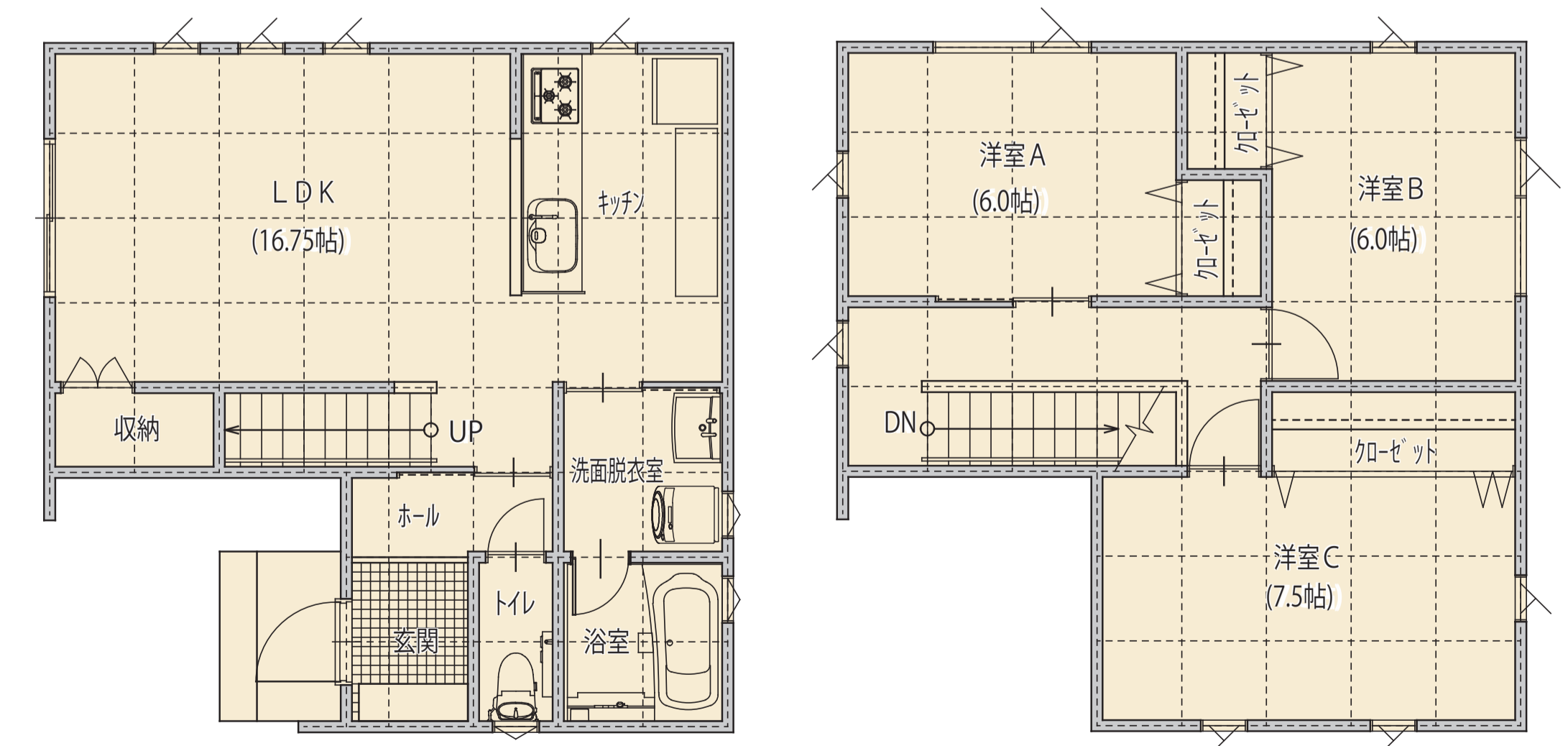


CONCEPT

広々 LDK

1F にうれしい収納

DETAIL



PLAN 13 (2階建 29.13坪)



CONCEPT

広いながらも水回りが
まとまって便利

DETAIL

